

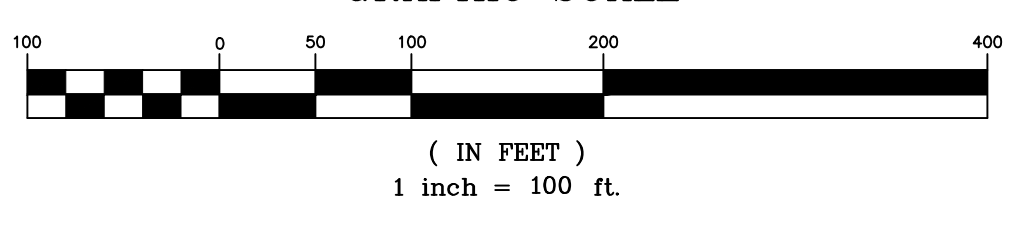
LOCATION MAP
N.T.S.

| LEGEND | | |
|-------------------|---|------------|
| COLOR | DESCRIPTION | TOTAL AREA |
| [Light Gray Box] | STEEP SLOPES (15% - 25%) | 464,562 SF |
| [Medium Gray Box] | VERY STEEP SLOPES (25% - 35%) | 213,288 SF |
| [Dark Gray Box] | EXCESSIVELY STEEP SLOPES (35% OR GREATER) | 239,038 SF |

| LEGEND | |
|---------------|--------------------------|
| [Solid Line] | EXISTING PROPERTY LINE |
| [Dotted Area] | WETLAND AREA |
| [Dashed Line] | WETLAND SETBACK LINE |
| [Dotted Line] | EXISTING STONE WALL |
| [Dashed Line] | EXISTING 2' CONTOUR |
| [Dotted Line] | EXISTING 10' CONTOUR |
| [Tree Symbol] | EXISTING TREE |
| [Dotted Line] | SOIL BOUNDARY LINE |
| [Color Box] | USGS SOIL CLASSIFICATION |
| [Circle] | HYDROLOGIC SOIL GROUP |

| SHEET INDEX | | |
|-------------|---------------------|------|
| 1 OF 6 | EXISTING CONDITIONS | EX-1 |
| 2 OF 6 | GRADING PLAN | GP-1 |
| 3 OF 6 | DRAINAGE PLAN | DP-1 |
| 4 OF 6 | UTILITY LAYOUT | UL-1 |
| 5 OF 6 | ROAD PROFILES I | RP-1 |
| 6 OF 6 | ROAD PROFILES II | RP-2 |

PLAN
GRAPHIC SCALE



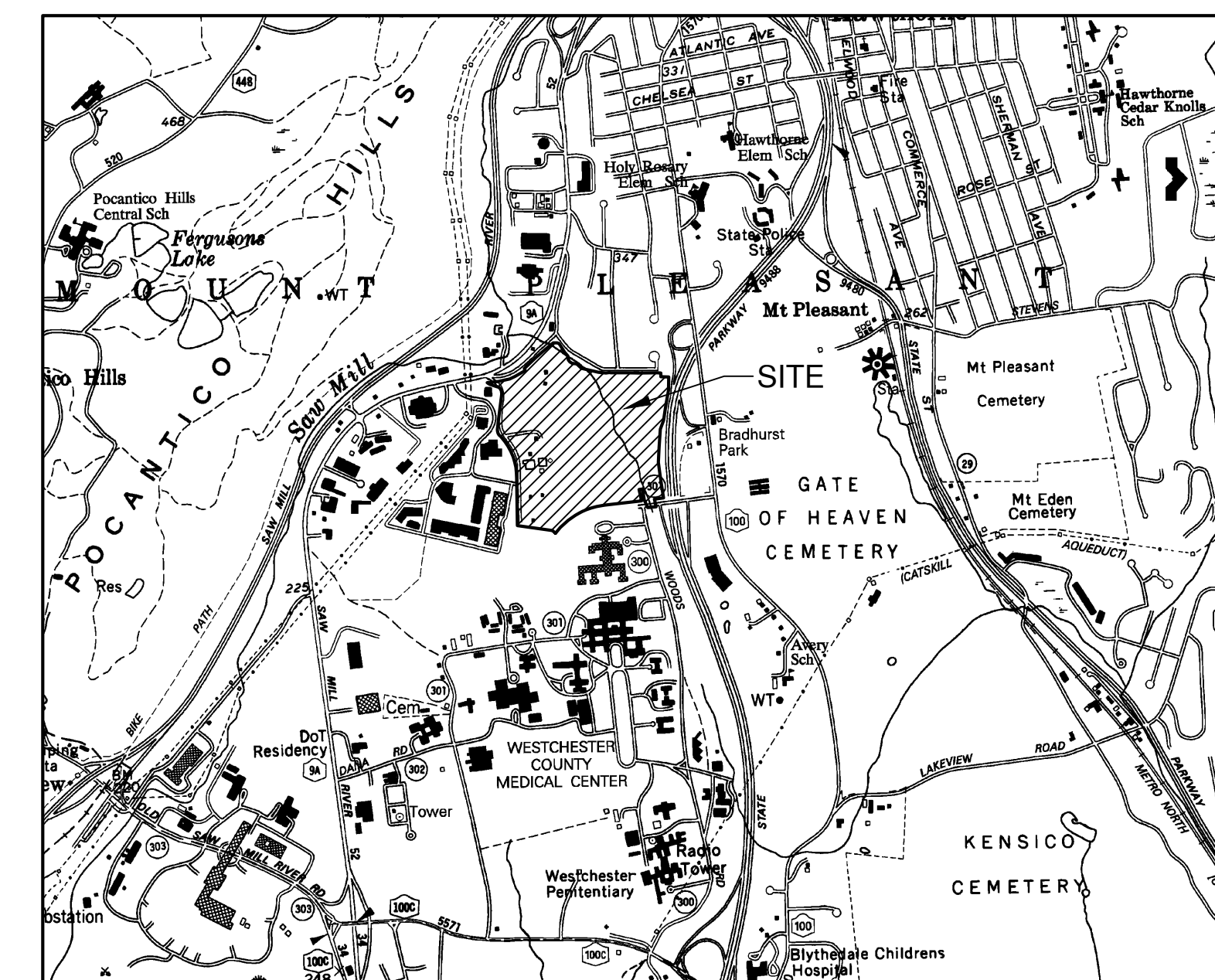
UNAUTHORIZED ALTERATIONS AND ADDITIONS TO THIS DRAWING IS A VIOLATION OF SECTION 2203 OF THE NEW YORK STATE ENGINEERING LAW.

| REVISIONS | | DATE | DESCRIPTION | BY/CHK | DATE | DESCRIPTION | BY/CHK |
|-----------|--|---------|--------------------------|--------|------|-------------|--------|
| | | 1-15-20 | UPDATED FOR DEIS | | | | NG/TA |
| | | 4-10-18 | REVISED SITE LAYOUT | | | | NG/TA |
| | | 3-2-18 | REVISED SITE LAYOUT | | | | NG/TA |
| | | 3-9-20 | DEIS COMPLETENESS REVIEW | | | | BY/CK |

EXISTING CONDITIONS
THE NORTH 60
 HOSPITAL ROAD & ROUTE 9A
 TOWN OF MOUNT PLEASANT, WESTCHESTER COUNTY

BIBBO ASSOCIATES, LLP
 293 ROUTE 100 SUITE 203
 SOMERS, NEW YORK 10589
 TEL. 914-277-8805

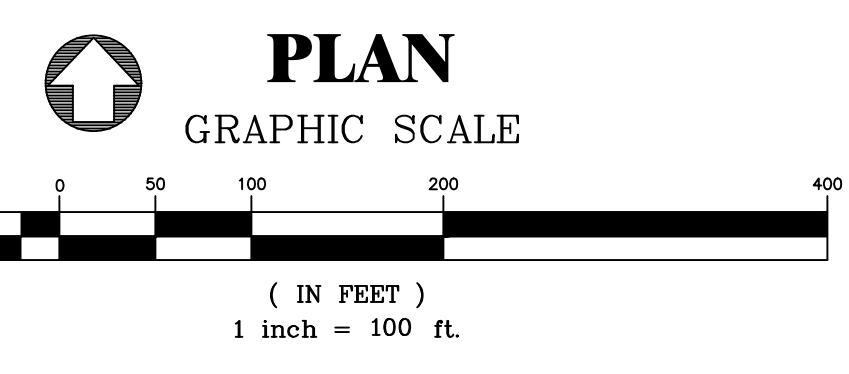
DATE: NOV. 14, 2017
 SCALE: 1" = 100'
 FILE: 12-D
 DSGN / CHK: NG/TA
 DRN. BY: NG
 SHT NO. 1 OF 6
 DWG NO. **EX-1**



LOCATION MAP
N.T.S.

| LEGEND | | |
|--------|---|------------------------|
| COLOR | DESCRIPTION | TOTAL DISTURBANCE AREA |
| | STEEP SLOPES (15% - 25%) | 238,126 SF |
| | VERY STEEP SLOPES (25% - 35%) | 65,918 SF |
| | EXCESSIVELY STEEP SLOPES (35% OR GREATER) | 71,613 SF |

| LEGEND | |
|--------|--|
| | EXISTING PROPERTY LINE |
| | PROPOSED PROPERTY LINE |
| | WETLAND AREA |
| | WETLAND SETBACK LINE |
| | EXISTING STONE WALL |
| | EXISTING 2' CONTOUR |
| | EXISTING 10' CONTOUR |
| | PROPOSED STORMWATER TREATMENT AREA |
| | PROPOSED 10' CONTOUR |
| | PROPOSED 2' CONTOUR |
| | DISTURBANCE LIMIT LINE (TOTAL AREA OF DISTURBANCE = 57.5 AC) |



UNAUTHORIZED ALTERATIONS AND ADDITIONS TO THIS DRAWING IS A VIOLATION OF SECTION 2209, 2301 OF THE NEW YORK STATE ENGINEERING LAW.

COPYRIGHT © 2017 BIBBO ASSOCIATES, LLP
ALL RIGHTS RESERVED. UNAUTHORIZED REPRODUCTION IS A VIOLATION OF APPLICABLE LAW.

| REVISIONS | DATE | DESCRIPTION | DATE | DESCRIPTION | DATE | DESCRIPTION | DATE | DESCRIPTION | |
|-----------|--------|--------------------------|---------|------------------|---------|---------------------|--------|---------------------|-------|
| | 3-9-20 | DEIS COMPLETENESS REVIEW | 1-15-20 | UPDATED FOR DEIS | 4-10-18 | REVISED SITE LAYOUT | 3-2-18 | REVISED SITE LAYOUT | NG/TA |
| | | | | | | | | | NG/TA |
| | | | | | | | | | NG/TA |
| | | | | | | | | | BY/CK |

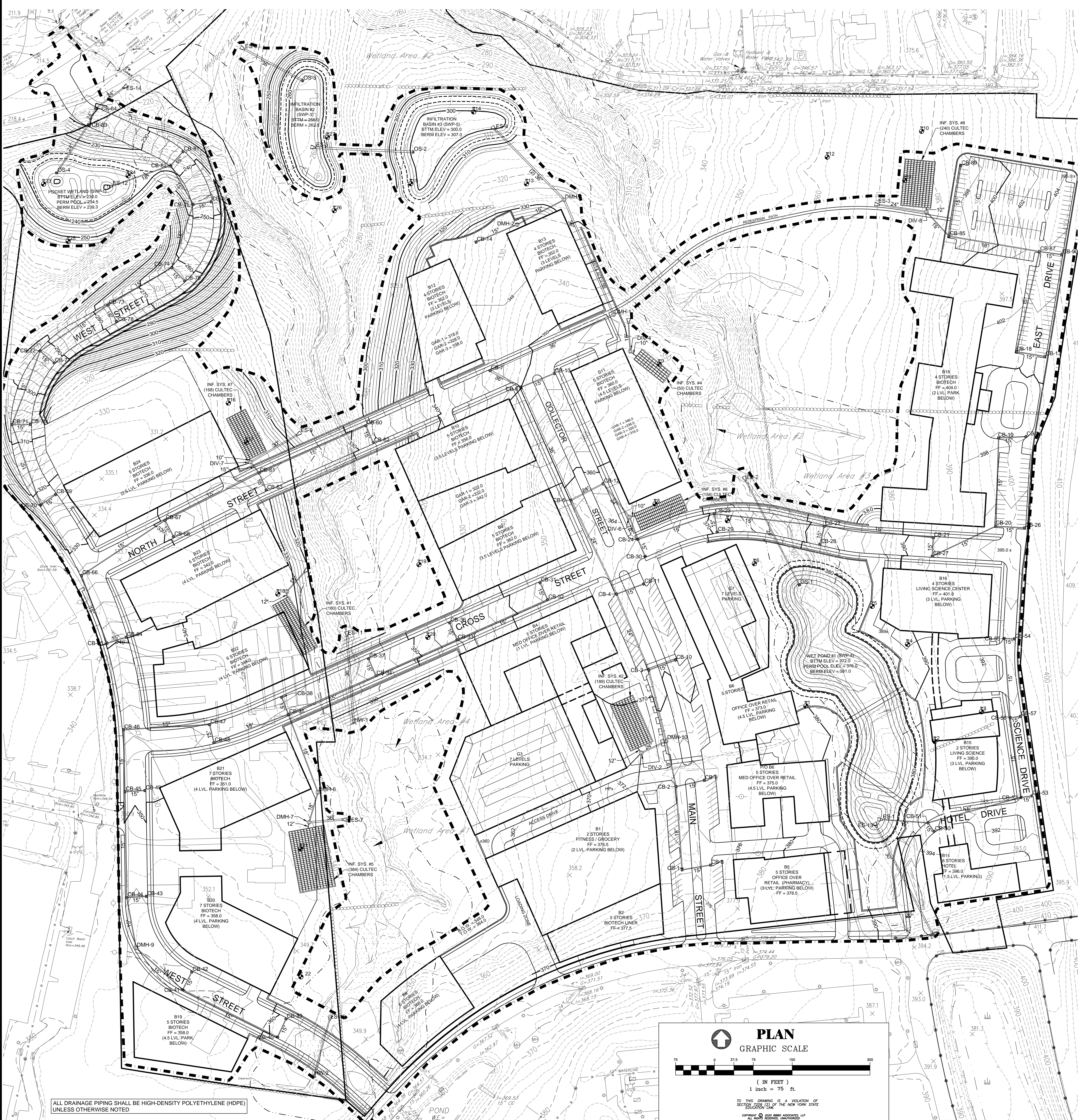
GRADING PLAN

DATE: NOV. 14, 2017
SCALE: 1" = 100'
FILE: 12-D
DSGN / CHK: NG/TA
DRN. BY: NG
SHT NO. 2 OF 6

WESTCHESTER MEDICAL VILLAGE
STREET ADDRESS
TOWN OF MOUNT PLEASANT, WESTCHESTER COUNTY

BIBBO ASSOCIATES, LLP
293 ROUTE 100 SUITE 203
SOMERS, NEW YORK 10589
TEL. 914-277-6805

DWG NO. **GP-1**



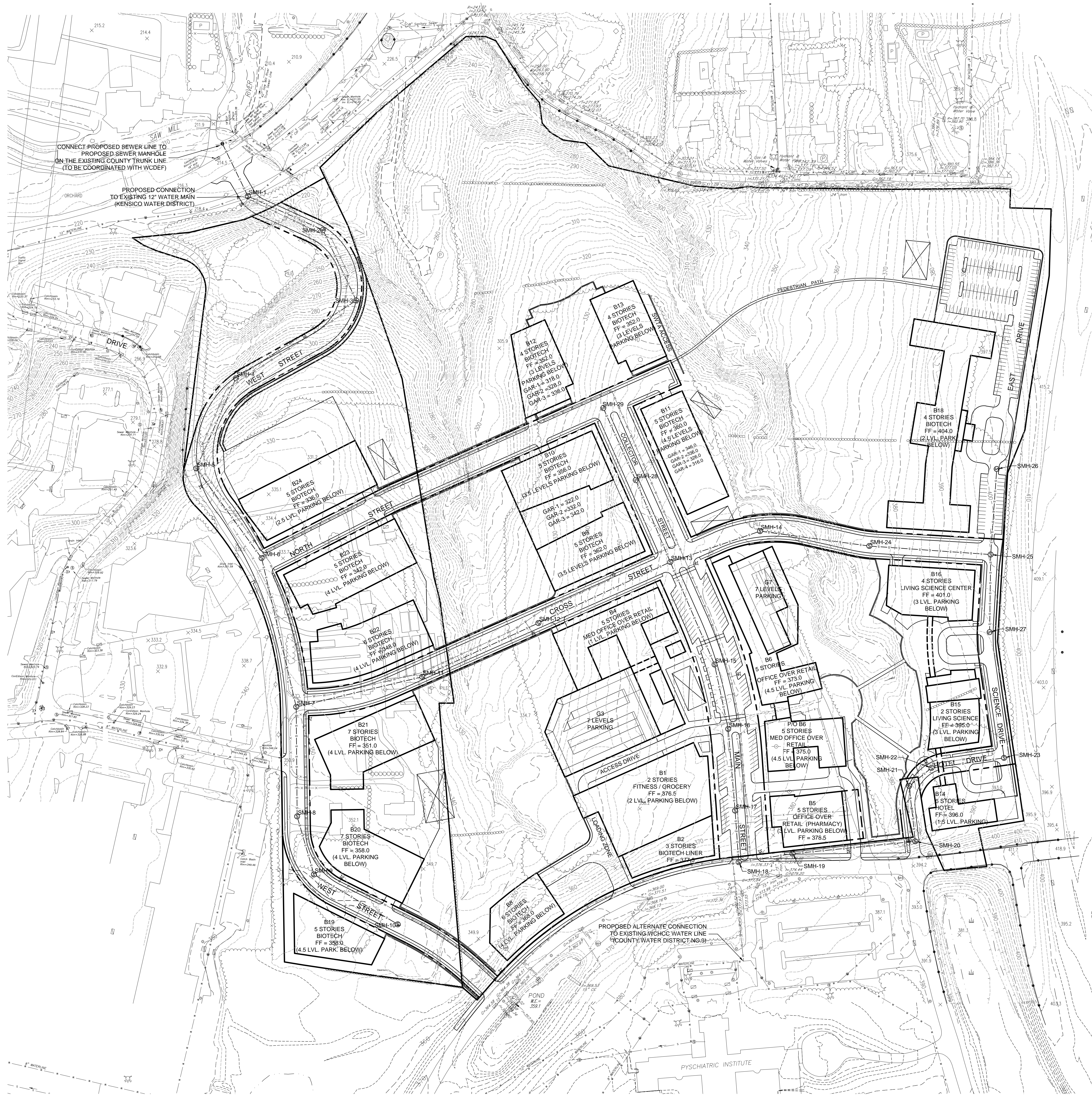
| DRAINAGE SCHEDULE | | | |
|-------------------|-----------|--|---|
| NAME | RIM ELEV. | PIPES IN: | PIPES OUT: |
| CB-1 | 374.77 | 15" HDPE FROM CB-8 INV IN = 370.70 L = 52.6' S = 1.00% | 18" HDPE TO CB-2 INV OUT = 371.41 L = 2.0' S = 2.00% |
| CB-2 | 372.35 | 18" HDPE FROM CB-1 INV IN = 368.19 L = 156.9' S = 2.00% | 18" HDPE TO DMH-10 INV OUT = 368.19 L = 3.0' S = 3.01% |
| CB-3 | 368.77 | 24" HDPE FROM DMH-10 INV IN = 363.57 L = 137.6' S = 1.36% | 24" HDPE TO CB-4 INV IN = 364.50 L = 52.2' S = 2.29% |
| CB-4 | 366.34 | 24" HDPE FROM CB-3 INV IN = 361.98 L = 155.1' S = 1.00% | 24" HDPE TO CB-5 INV IN = 361.98 L = 148.5' S = 3.00% |
| CB-5 | 361.24 | 24" HDPE FROM CB-4 INV IN = 355.84 L = 197.5' S = 3.00% | 30" HDPE TO CB-6 INV IN = 355.84 L = 4.2' S = 4.17% |
| CB-6 | 350.95 | 30" HDPE FROM CB-5 INV IN = 346.00 L = 66.7' S = 2.15% | 30" HDPE TO CB-7 INV IN = 346.00 L = 4.5' S = 4.45% |
| CB-7 | 347.80 | 30" HDPE FROM CB-6 INV IN = 343.30 L = 63.1' S = 4.45% | 30" HDPE TO DMH-1 INV IN = 343.30 L = 1.1' S = 1.15% |
| CB-8 | 374.70 | 15" HDPE TO CB-1 INV IN = 371.34 L = 1.0' S = 1.00% | 15" HDPE TO CB-2 INV IN = 371.34 L = 1.0' S = 1.00% |
| CB-9 | 372.25 | 15" HDPE TO CB-2 INV IN = 368.89 L = 1.0' S = 1.00% | 15" HDPE TO CB-3 INV IN = 368.89 L = 2.3' S = 2.29% |
| CB-10 | 368.96 | 15" HDPE TO CB-3 INV IN = 363.00 L = 1.8' S = 1.80% | 15" HDPE TO CB-4 INV IN = 363.00 L = 1.5' S = 1.52% |
| CB-11 | 366.41 | 15" HDPE TO CB-4 INV IN = 357.00 L = 1.5' S = 1.52% | 15" HDPE TO CB-5 INV IN = 357.00 L = 1.5' S = 1.52% |
| CB-12 | 361.08 | 24" HDPE FROM DIV-6 INV IN = 357.00 L = 78.5' S = 5.47% | 15" HDPE TO CB-6 INV IN = 357.00 L = 2.2' S = 2.15% |
| CB-13 | 350.69 | 15" HDPE TO CB-6 INV IN = 347.50 L = 2.2' S = 2.15% | 15" HDPE TO CB-7 INV IN = 347.50 L = 1.9' S = 1.91% |
| CB-14 | 346.10 | 15" HDPE TO DMH-2 INV IN = 340.00 L = 3.5' S = 3.48% | 15" HDPE TO CB-8 INV IN = 340.00 L = 1.9' S = 1.81% |
| CB-15 | 401.50 | 15" HDPE TO CB-8 INV IN = 397.00 L = 1.8' S = 1.81% | 15" HDPE TO CB-9 INV IN = 397.00 L = 1.0' S = 1.01% |
| CB-16 | 401.50 | 15" HDPE TO CB-9 INV IN = 396.00 L = 52.2' S = 1.81% | 15" HDPE TO CB-10 INV IN = 396.00 L = 1.0' S = 1.01% |
| CB-17 | 397.80 | 15" HDPE TO CB-10 INV IN = 393.00 L = 1.5' S = 1.47% | 15" HDPE TO CB-11 INV IN = 393.00 L = 0.9' S = 0.90% |
| CB-18 | 395.00 | 15" HDPE TO CB-11 INV IN = 387.12 L = 32.7' S = 0.99% | 15" HDPE TO CB-12 INV IN = 387.12 L = 2.6' S = 2.58% |
| CB-19 | 391.68 | 15" HDPE FROM CB-21 INV IN = 374.90 L = 207.8' S = 6.10% | 15" HDPE TO CB-22 INV IN = 374.90 L = 3.2' S = 3.10% |
| CB-20 | 381.44 | 15" HDPE FROM CB-19 INV IN = 376.20 L = 32.6' S = 1.00% | 15" HDPE TO CB-23 INV IN = 376.20 L = 5.2' S = 5.18% |
| CB-21 | 369.88 | 15" HDPE FROM CB-20 INV IN = 366.00 L = 32.8' S = 1.00% | 15" HDPE TO CB-24 INV IN = 366.00 L = 1.9' S = 1.93% |
| CB-22 | 366.19 | 15" HDPE FROM CB-21 INV IN = 363.00 L = 151.7' S = 1.93% | 15" HDPE TO CB-25 INV IN = 363.00 L = 1.4' S = 1.40% |
| CB-23 | 366.19 | 15" HDPE FROM CB-22 INV IN = 360.00 L = 47.9' S = 1.91% | 15" HDPE TO CB-26 INV IN = 360.00 L = 52.3' S = 0.90% |
| CB-24 | 361.69 | 15" HDPE FROM CB-23 INV IN = 357.00 L = 131.4' S = 2.58% | 15" HDPE TO CB-27 INV IN = 357.00 L = 1.0' S = 0.99% |
| CB-25 | 358.10 | 15" HDPE TO CB-27 INV IN = 354.40 L = 1.0' S = 0.99% | 15" HDPE TO CB-28 INV IN = 354.40 L = 1.0' S = 1.00% |
| CB-26 | 358.10 | 15" HDPE TO CB-28 INV IN = 354.40 L = 1.0' S = 1.00% | 15" HDPE TO CB-29 INV IN = 354.40 L = 1.0' S = 1.00% |
| CB-27 | 351.69 | 15" HDPE TO CB-29 INV IN = 347.00 L = 131.4' S = 2.58% | 15" HDPE TO CB-30 INV IN = 347.00 L = 32.7' S = 1.40% |
| CB-28 | 348.42 | 15" HDPE TO CB-30 INV IN = 343.00 L = 52.3' S = 1.40% | 15" HDPE TO CB-31 INV IN = 343.00 L = 1.0' S = 1.00% |
| CB-29 | 370.40 | 15" HDPE TO CB-31 INV IN = 368.00 L = 1.0' S = 1.00% | 15" HDPE TO CB-32 INV IN = 368.00 L = 6.2' S = 6.25% |
| CB-30 | 366.50 | 15" HDPE TO CB-32 INV IN = 362.00 L = 32.7' S = 1.40% | 15" HDPE TO CB-33 INV IN = 362.00 L = 6.2' S = 6.25% |
| CB-31 | 362.27 | 15" HDPE FROM CB-31 INV IN = 358.30 L = 32.9' S = 1.00% | 15" HDPE TO CB-34 INV IN = 358.30 L = 2.5' S = 2.52% |
| CB-32 | 362.27 | 15" HDPE FROM CB-32 INV IN = 354.00 L = 197.3' S = 6.25% | 15" HDPE TO CB-35 INV IN = 354.00 L = 32.8' S = 1.00% |
| CB-33 | 353.74 | 15" HDPE FROM CB-33 INV IN = 342.50 L = 157.6' S = 2.52% | 15" HDPE TO CB-36 INV IN = 342.50 L = 1.9' S = 1.90% |
| CB-34 | 346.48 | 15" HDPE FROM CB-34 INV IN = 339.00 L = 180.4' S = 1.90% | 15" HDPE TO DMH-4 INV IN = 339.00 L = 1.1' S = 1.12% |
| CB-35 | 343.80 | 15" HDPE FROM CB-35 INV IN = 336.00 L = 148.6' S = 1.55% | 15" HDPE TO CB-37 INV IN = 336.00 L = 1.0' S = 1.00% |
| CB-36 | 353.74 | 15" HDPE TO CB-37 INV IN = 348.92 L = 1.0' S = 1.00% | 15" HDPE TO CB-38 INV IN = 348.92 L = 1.4' S = 1.40% |
| CB-37 | 346.50 | 15" HDPE TO CB-38 INV IN = 343.00 L = 1.4' S = 1.40% | 15" HDPE TO CB-39 INV IN = 343.00 L = 2.8' S = 2.84% |
| CB-38 | 343.79 | 15" HDPE TO CB-39 INV IN = 340.00 L = 2.8' S = 2.84% | 15" HDPE TO DMH-5 INV IN = 340.00 L = 1.0' S = 1.00% |
| CB-39 | 360.55 | 15" HDPE TO DMH-5 INV IN = 357.19 L = 1.0' S = 1.00% | 15" HDPE TO CB-40 INV IN = 357.19 L = 3.1' S = 3.08% |
| CB-40 | 360.55 | 15" HDPE FROM CB-39 INV IN = 356.80 L = 35.8' S = 1.00% | 15" HDPE TO DMH-6 INV IN = 356.80 L = 1.2' S = 1.24% |
| CB-41 | 354.41 | 15" HDPE FROM CB-40 INV IN = 344.20 L = 209.6' S = 3.08% | 15" HDPE TO CB-42 INV IN = 344.20 L = 1.4' S = 1.43% |
| CB-42 | 354.41 | 15" HDPE FROM CB-41 INV IN = 348.45 L = 1.2' S = 1.24% | 15" HDPE TO CB-43 INV IN = 348.45 L = 1.2' S = 1.20% |
| CB-43 | 351.81 | 15" HDPE TO CB-44 INV IN = 347.80 L = 1.5' S = 1.51% | 15" HDPE TO CB-45 INV IN = 347.80 L = 2.0' S = 2.00% |
| CB-44 | 351.81 | 15" HDPE FROM DMH-9 INV IN = 347.80 L = 156.4' S = 1.52% | 15" HDPE TO CB-46 INV IN = 347.80 L = 1.5' S = 1.51% |
| CB-45 | 348.29 | 15" HDPE FROM CB-44 INV IN = 344.20 L = 209.6' S = 1.51% | 15" HDPE TO CB-47 INV IN = 344.20 L = 1.3' S = 1.28% |
| CB-46 | 347.25 | 15" HDPE FROM CB-45 INV IN = 343.50 L = 115.8' S = 2.00% | 15" HDPE TO CB-48 INV IN = 343.50 L = 1.0' S = 1.00% |
| CB-47 | 345.39 | 15" HDPE FROM CB-46 INV IN = 341.40 L = 162.8' S = 1.26% | 15" HDPE TO CB-49 INV IN = 341.40 L = 32.9' S = 1.00% |
| CB-48 | 345.39 | 15" HDPE FROM CB-47 INV IN = 341.00 L = 32.9' S = 1.00% | 15" HDPE TO CB-50 INV IN = 341.00 L = 1.6' S = 1.55% |
| CB-49 | 349.26 | 15" HDPE TO CB-50 INV IN = 339.33 L = 1.6' S = 1.61% | 15" HDPE TO ES-1 INV IN = 339.33 L = 8.5' S = 8.46% |
| CB-50 | 393.00 | 15" HDPE FROM CB-50 INV IN = 389.00 L = 17.0' S = 1.61% | 15" HDPE TO ES-1 INV IN = 389.00 L = 8.5' S = 8.46% |

| DRAINAGE SCHEDULE | | | |
|-------------------|-----------|--|---|
| NAME | RIM ELEV. | PIPES IN: | PIPES OUT: |
| CB-51 | 393.00 | 15" HDPE FROM CB-51 INV IN = 389.00 L = 17.0' S = 1.61% | 15" HDPE TO ES-1 INV IN = 389.00 L = 8.5' S = 8.46% |
| CB-52 | 391.50 | 15" HDPE FROM CB-52 INV IN = 385.50 L = 151.1' S = 1.29% | 15" HDPE TO CB-53 INV IN = 385.50 L = 1.1' S = 1.07% |
| CB-53 | 391.50 | 15" HDPE FROM CB-53 INV IN = 385.50 L = 151.1' S = 1.29% | 15" HDPE TO CB-54 INV IN = 385.50 L = 2.4' S = 2.36% |
| CB-54 | 393.30 | 15" HDPE FROM CB-54 INV IN = 389.50 L = 16.8' S = 2.53% | 15" HDPE TO CB-55 INV IN = 389.50 L = 1.9' S = 1.30% |
| CB-55 | 393.30 | 15" HDPE FROM CB-55 INV IN = 389.50 L = 16.8' S = 2.53% | 15" HDPE TO CB-56 INV IN = 389.50 L = 1.3' S = 1.29% |
| CB-56 | 391.80 | 15" HDPE FROM CB-56 INV IN = 387.50 L = 16.8' S = 1.52% | 15" HDPE TO CB-57 INV IN = 387.50 L = 1.5' S = 1.52% |
| CB-57 | 391.80 | 15" HDPE FROM CB-57 INV IN = 387.50 L = 16.8' S = 1.52% | 15" HDPE TO CB-58 INV IN = 387.50 L = 3.3' S = 3.33% |
| CB-58 | 331.33 | 15" HDPE FROM CB-58 INV IN = 327.68 L = 32.8' S = 1.00% | 15" HDPE TO CB-59 INV IN = 327.68 L = 3.3' S = 3.33% |
| CB-59 | 325.71 | 15" HDPE FROM CB-59 INV IN = 321.00 L = 32.7' S = 4.02% | 15" HDPE TO DIV-7 INV IN = 321.00 L = 11.3' S = 11.25% |
| CB-60 | 325.71 | 15" HDPE FROM CB-60 INV IN = 321.00 L = 32.7' S = 4.02% | 15" HDPE TO CB-61 INV IN = 321.00 L = 1.0' S = 1.00% |
| CB-61 | 325.71 | 15" HDPE FROM CB-61 INV IN = 321.00 L = 32.7' S = 4.02% | 15" HDPE TO CB-62 INV IN = 321.00 L = 4.0' S = 4.02% |
| CB-62 | 325.71 | 15" HDPE FROM CB-62 INV IN = 321.00 L = 32.7' S = 4.02% | 15" HDPE TO CB-63 INV IN = 321.00 L = 1.0' S = 1.00% |
| CB-63 | 325.71 | 15" HDPE FROM CB-63 INV IN = 321.00 L = 32.7' S = 4.02% | 15" HDPE TO CB-64 INV IN = 321.00 L = 1.0' S = 1.01% |
| CB-64 | 339.45 | 15" HDPE FROM CB-64 INV IN = 335.88 L = 35.8' S = 1.01% | 15" HDPE TO CB-65 INV IN = 335.88 L = 3.9' S = 3.94% |
| CB-65 | 339.45 | 15" HDPE FROM CB-65 INV IN = 335.88 L = 35.8' S = 1.01% | 15" HDPE TO CB-66 INV IN = 335.88 L = 2.4' S = 2.41% |
| CB-66 | 338.50 | 15" HDPE FROM CB-66 INV IN = 332.55 L = 135.7' S = 3.94% | 15" HDPE TO CB-67 INV IN = 332.55 L = 2.4' S = 2.41% |
| CB-67 | 338.50 | 15" HDPE FROM CB-67 INV IN = 332.55 L = 135.7' S = 3.94% | 15" HDPE TO CB-68 INV IN = 332.55 L = 2.4' S = 2.41% |
| CB-68 | 328.28 | 15" HDPE FROM CB-68 INV IN = 324.85 L = 32.6' S = 0.99% | 15" HDPE TO CB-69 INV IN = 324.85 L = 2.4' S = 2.39% |
| CB-69 | 328.28 | 15" HDPE FROM CB-69 INV IN = 324.85 L = 32.6' S = 0.99% | 15" HDPE TO CB-70 INV IN = 324.85 L = 1.0' S = 1.00% |
| CB-70 | 322.06 | 15" HDPE FROM CB-70 INV IN = 318.36 L = 32.6' S = 1.00% | 15" HDPE TO CB-71 INV IN = 318.36 L = 10.0' S = 9.99% |
| CB-71 | 306.48 | 15" HDPE FROM CB-71 INV IN = 301.20 L = 161.7' S = 9.99% | 15" HDPE TO CB-72 INV IN = 301.20 L = 9.0' S = 8.99% |
| CB-72 | 292.22 | 15" HDPE FROM CB-72 INV IN = 288.50 L = 32.6' S = 1.00% | 15" HDPE TO CB-73 INV IN = 288.50 L = 7.0' S = 8.99% |
| CB-73 | 276.94 | 15" HDPE FROM CB-73 INV IN = 273.29 L = 164.7' S = 8.99% | 15" HDPE TO CB-74 INV IN = 273.29 L = 10.0' S = 10.01% |
| CB-74 | 262.22 | 15" HDPE FROM CB-74 INV IN = 258.00 L = 32.6' S = 1.01% | 15" HDPE TO CB-75 INV IN = 258.00 L = 10.0' S = 10.04% |
| CB-75 | 247.01 | 15" HDPE FROM CB-75 INV IN = 243.15 L = 124.5' S = 10.04% | 15" HDPE TO CB-76 INV IN = 243.15 L = 10.0' S = 10.00% |
| CB-76 | 306.35 | 15" HDPE TO CB-76 INV IN = 302.99 L = 1.0' S = 1.00% | 15" HDPE TO CB-77 INV IN = 302.99 L = 1.0' S = 1.00% |
| CB-77 | 292.21 | 15" HDPE TO CB-77 INV IN = 288.85 L = 1.0' S = 1.00% | 15" HDPE TO CB-78 INV IN = 288.85 L = 1.0' S = 1.01% |
| CB-78 | 277.01 | 15" HDPE TO CB-78 INV IN = 273.65 L = 32.6' S = 1.01% | 15" HDPE TO CB-79 INV IN = 273.65 L = 1.0' S = 1.00% |
| CB-79 | 262.13 | 15" HDPE TO CB-79 INV IN = 258.77 L = 1.0' S = 1.00% | 15" HDPE TO CB-80 INV IN = 258.77 L = 1.0' S = 1.00% |
| CB-80 | 247.10 | 15" HDPE TO CB-80 INV IN = 243.74 L = 1.0' S = 1.00% | 15" HDPE TO CB-81 INV IN = 243.74 L = 1.0' S = 1.00% |
| CB-81 | 237.01 | 15" HDPE TO CB-81 INV IN = 233.65 L = 1.0' S = 1.00% | 15" HDPE TO ES-12 INV IN = 233.65 L = 1.7' S = 1.67% |
| CB-82 | 236.99 | 15" HDPE FROM CB-82 INV IN = 232.96 L = 83.1' S = 10.00% | 15" HDPE TO CB-83 INV IN = 232.96 L = 1.0' S = 1.00% |
| CB-83 | 219.75 | 24" HDPE FROM OS-4 INV IN = 216.50 L = 108.9' S = 13.97% | 24" HDPE TO CB-84 INV IN = 216.50 L = 1.4' S = 1.43% |
| CB-84 | 219.75 | 24" HDPE FROM CB-83 INV IN = 216.50 L = 32.5' S = 1.43% | 24" HDPE TO ES-14 INV IN = 216.50 L = 1.5' S = 1.50% |
| CB-85 | 397.50 | 15" HDPE FROM CB-85 INV IN = 390.00 L = 173.7' S = 2.27% | 15" HDPE TO CB-86 INV IN = 390.00 L = 6.2' S = 6.24% |
| CB-86 | 403.50 | 15" HDPE FROM CB-86 INV IN = 394.00 L = 194.3' S = 1.01% | 15" HDPE TO CB-87 INV IN = 394.00 L = 2.3' S = 2.27% |
| CB-87 | 397.50 | 15" HDPE TO CB-87 INV IN = 393.00 L = 2.2' S = 2.18% | 15" HDPE TO CB-88 INV IN = 393.00 L = 2.2' S = 2.18% |
| CB-88 | 403.50 | 15" HDPE TO CB-88 INV IN = 398.00 L = 2.2' S = 2.18% | 15" HDPE TO CB-89 INV IN = 398.00 L = 2.3' S = 2.29% |
| CB-89 | 397.50 | 15" HDPE TO CB-89 INV IN = 393.00 L = 2.2' S = 2.18% | 15" HDPE TO CB-90 INV IN = 393.00 L = 2.3' S = 2.29% |
| CB-90 | 403.50 | 15" HDPE TO CB-90 INV IN = 398.00 L = 2.2' S = 2.18% | 15" HDPE TO ES-15 INV IN = 398.00 L = 2.3' S = 2.29% |
| DIV-1 | 327.13 | 15" HDPE TO ES-15 INV IN = 323.50 L = 3.6' S = 8.87% | 12" HDPE TO INF-40 INV IN = 323.50 L = 0.0' S = 0.00% |
| DIV-2 | 370.00 | 24" HDPE TO DMH-10 INV IN = 366.50 L = 1.9' S = 1.90% | 12" HDPE TO INF-40 INV IN = 366.50 L = 0.0' S = 0.00% |
| DIV-4 | 354.00 | 18" HDPE TO ES-10 INV IN = 345.00 L = 9.1' S = 9.08% | 12" HDPE TO INF-41 INV IN = 345.00 L = 0.0' S = 0.00% |
| DIV-6 | 366.25 | 18" HDPE TO CB-24 INV IN = 362.00 L = 42.2' S = 1.09% | 24" HDPE TO CB-12 INV IN = 362.00 L = 5.5' S = 5.47% |
| DIV-7 | 319.00 | 15" HDPE TO CB-24 INV IN = 313.00 L = 23.4' S = 11.25% | 15" HDPE TO INF-40 INV IN = 313.00 L = 0.0' S = 0.00% |
| DIV-8 | 370.00 | 15" HDPE FROM CB-85 INV IN = 370.00 L = 60.3' S = 6.24% | 24" HDPE TO ES-3 INV IN = 370.00 L = 1.1' S = 1.08% |
| DMH-1 | 352.00 | 36" HDPE FROM CB-7 INV IN = 349.00 L = 22.8' S = 1.15% | 12" HDPE TO INF-86 INV IN = 349.00 L = 0.0' S = 0.00% |
| DMH-2 | 346.50 | 15" HDPE FROM CB-14 INV IN = 337.00 L = 82.7' S = 3.48% | 36" HDPE TO DMH-3 INV IN = 337.00 L = 9.1' S = 9.12% |
| DMH-3 | 326.00 | 15" HDPE FROM DMH-1 INV IN = 318.00 L = 238.6' S = 9.12% | 36" HDPE TO ES-4 INV IN = 318.00 L = 9.0' S = 8.96% |
| DMH-6 | 340.00 | 18" HDPE FROM CB-15 INV IN = 335.50 L = 57.5' S = 1.12% | 36" HDPE TO ES-4 INV IN = 335.50 L = 1.7' S = 1.68% |
| DMH-7 | 342.00 | 18" HDPE FROM DMH-6 INV IN = 335.50 L = 56.4' S = 1.66% | 12" HDPE TO INF-45 INV IN = 335.50 L = 0.0' S = 0.00% |
| DMH-9 | 353.41 | 15" HDPE FROM CB-41 INV IN = 349.00 L = 116.8' S = 1.24% | 15" HDPE TO CB-44 INV IN = 349.00 L = 1.5' S = 1.52% |
| DMH-10 | 369.03 | 18" HDPE FROM CB-2 INV IN = 365.50 L = 85.5' S = 3.01% | 24" HDPE TO CB-3 INV IN = 365.50 L = 1.4' S = 1.36% |

LEGEND

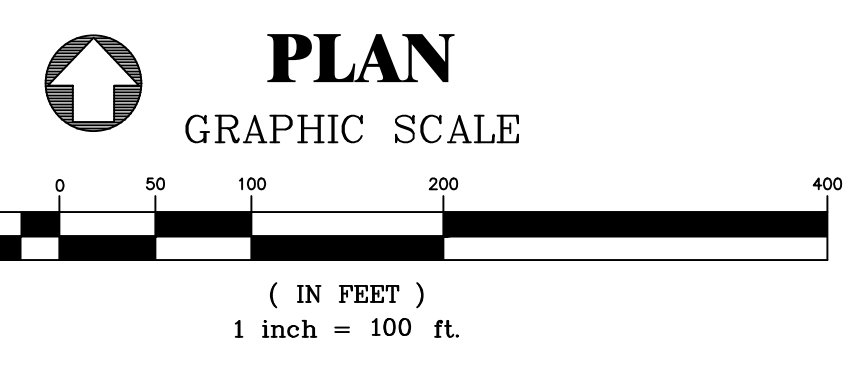
- EXISTING PROPERTY LINE
- - - PROPOSED PROPERTY LINE
- WETLAND AREA
- WETLAND SETBACK LINE
- EXISTING STONE WALL
- EXISTING 2' CONTOUR
- EXISTING 10' CONTOUR
- SOIL TEST LOCATION
- PROPOSED 10' CONTOUR
- PROPOSED 2' CONTOUR
- - - - - DISTURBANCE LIMIT LINE

REVISIONS



LEGEND

| | |
|--|------------------------------------|
| | EXISTING PROPERTY LINE |
| | PROPOSED PROPERTY LINE |
| | EXISTING STONE WALL |
| | EXISTING 2' CONTOUR |
| | EXISTING 10' CONTOUR |
| | EXISTING WATER LINE |
| | PROPOSED WATER LINE |
| | EXISTING SEWER LINE |
| | PROPOSED SEWER LINE |
| | PROPOSED SEWER MANHOLE |
| | PROPOSED STORMWATER TREATMENT AREA |



UNAUTHORIZED ALTERATIONS AND ADDITIONS TO THIS DRAWING IS A VIOLATION OF SECTION 2209 OF THE NEW YORK STATE ENGINEERING LAW.

COPYRIGHT © 2017 BIBBO ASSOCIATES, LLP
ALL RIGHTS RESERVED. UNAUTHORIZED REPRODUCTION IS A VIOLATION OF APPLICABLE LAW.

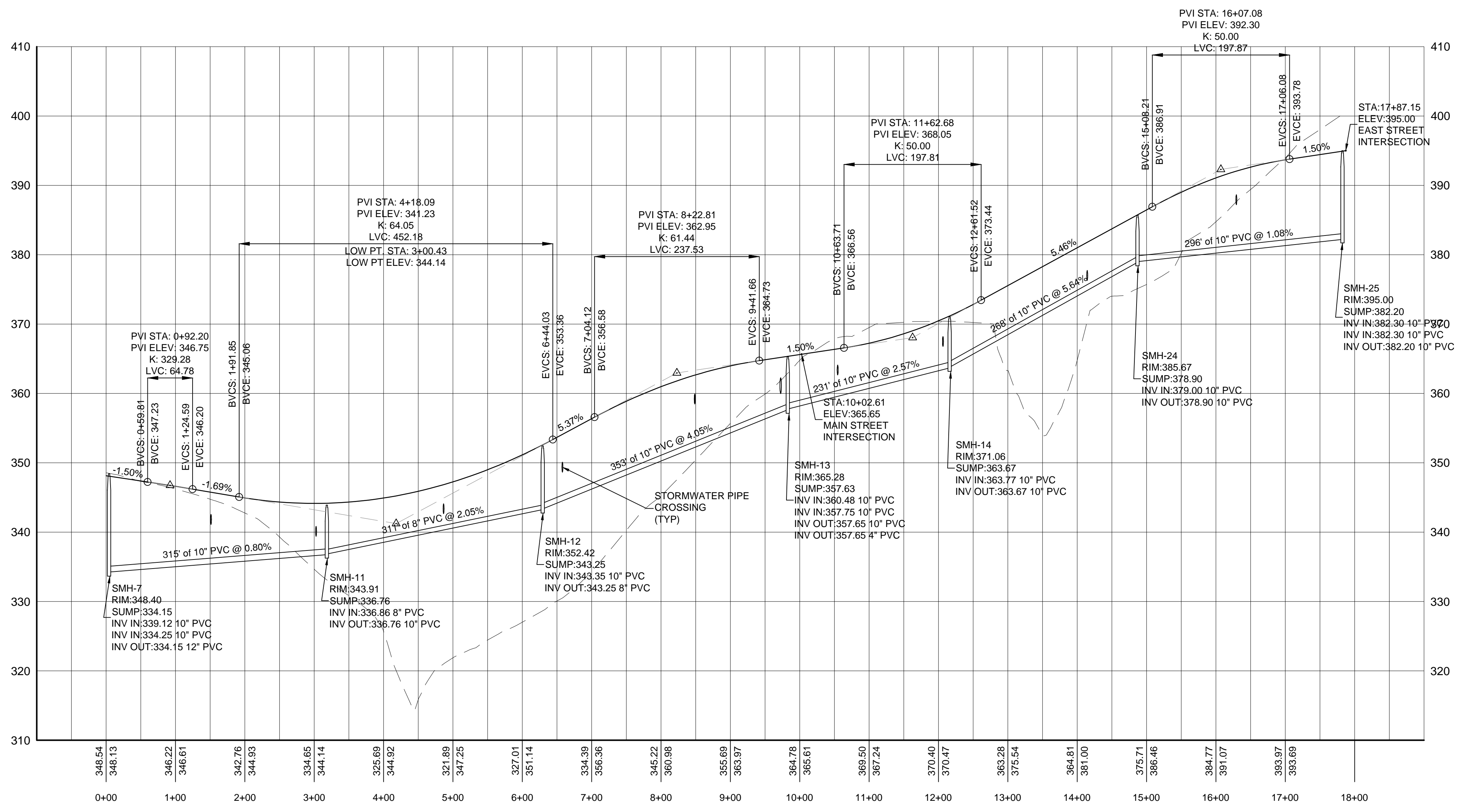
| REVISIONS | DATE | DESCRIPTION | DATE | DESCRIPTION | DATE | DESCRIPTION | DATE | DESCRIPTION |
|-----------|---------|--------------------------|------|-------------|------|-------------|------|-------------|
| | 1-15-20 | UPDATED FOR DEIS | | | | | | NG/TA |
| | 4-10-18 | REVISED SITE LAYOUT | | | | | | NG/TA |
| | 3-2-18 | REVISED SITE LAYOUT | | | | | | NG/TA |
| | 3-9-20 | DEIS COMPLETENESS REVIEW | | | | | | BY/CK |

UTILITY LAYOUT

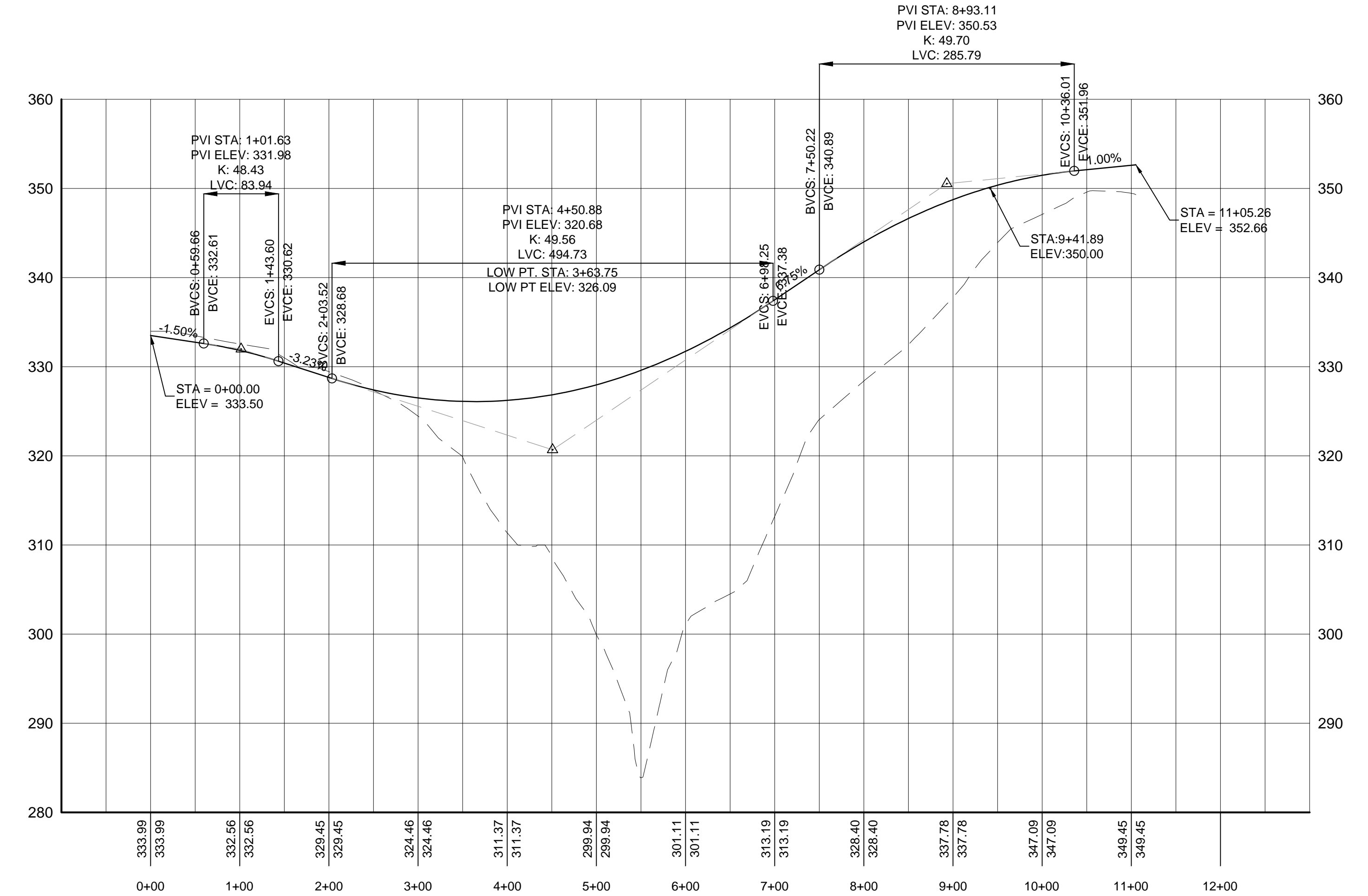
WESTCHESTER MEDICAL VILLAGE
STREET ADDRESS
TOWN OF MOUNT PLEASANT, WESTCHESTER COUNTY

DATE: NOV. 14, 2017
SCALE: 1" = 100'
FILE: 12-D
DSGN / CHK: NG/TA
DRN. BY: NG
SHT NO. 4 OF 6
DWG NO. **UL-1**

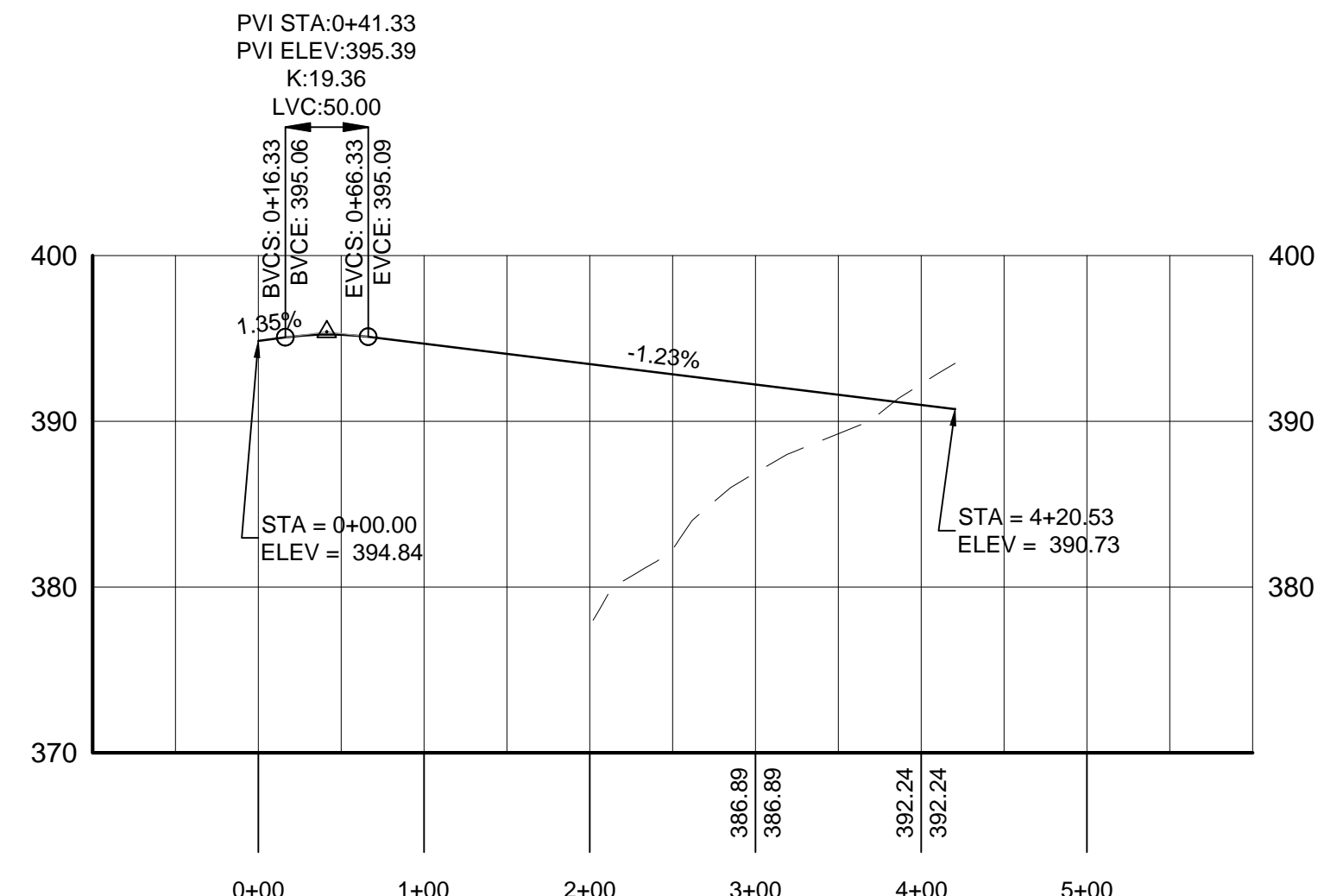
BIBBO ASSOCIATES, LLP
293 ROUTE 100 SUITE 203
SOMERS, NEW YORK 10589
TEL. 914-277-6805



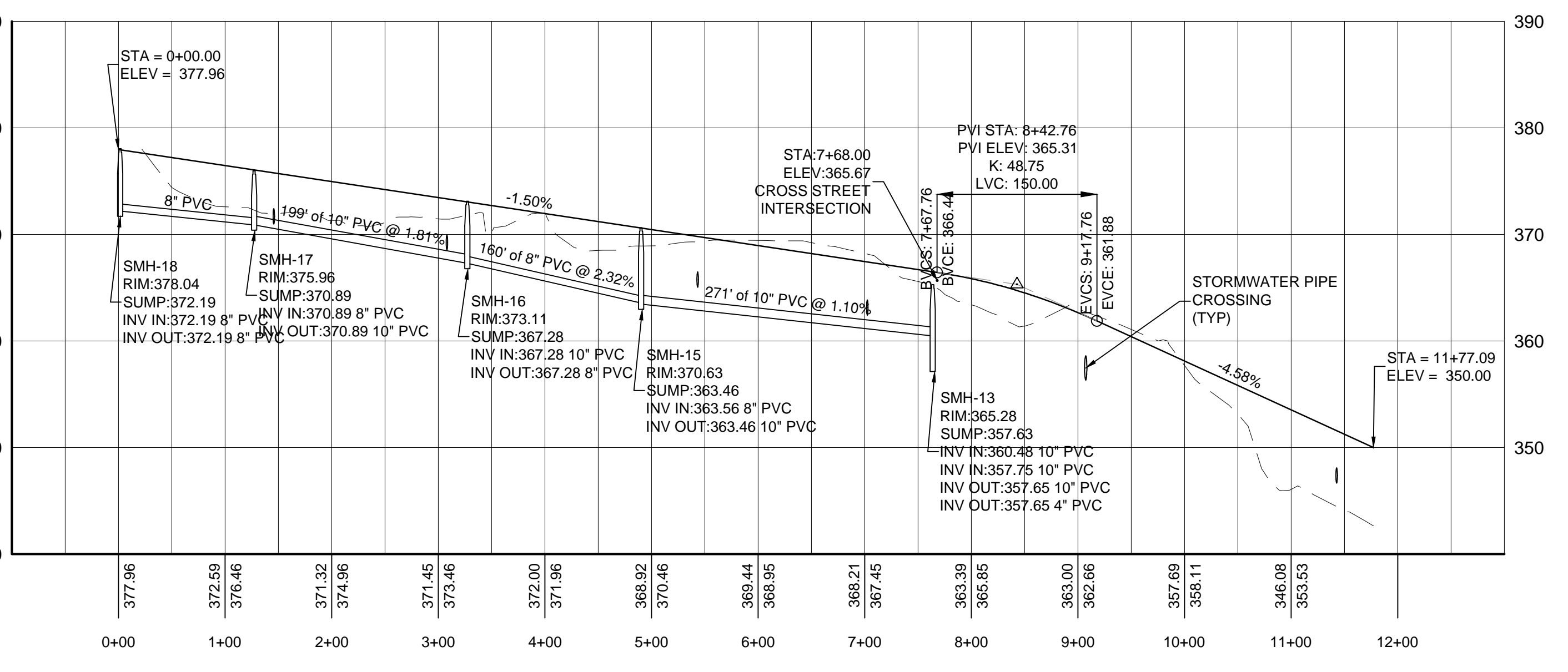
CROSS STREET PROFILE
SCALE: HORIZONTAL: 1" = 100'
VERTICAL: 1" = 10'



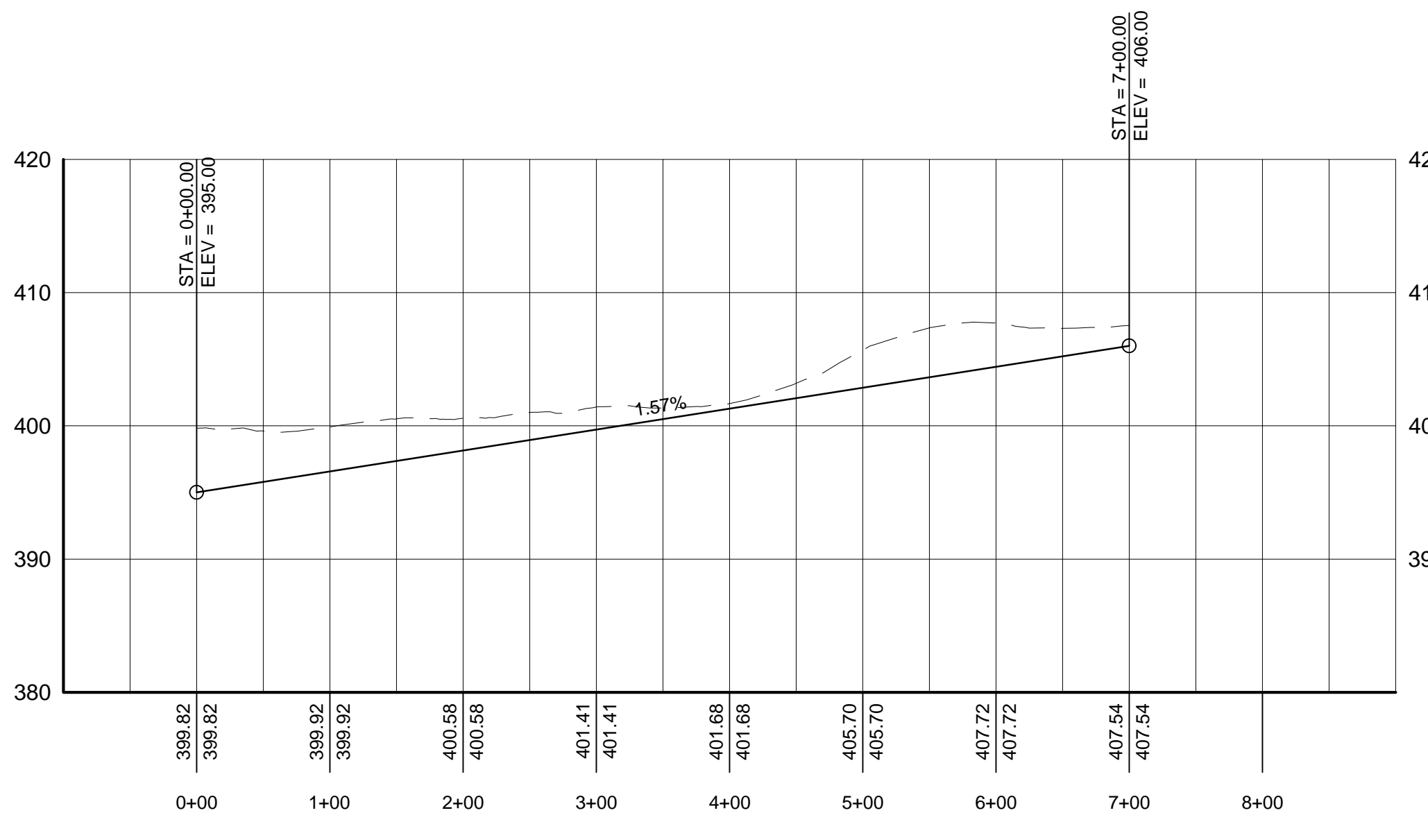
NORTH STREET PROFILE
SCALE: HORIZONTAL: 1" = 100'
VERTICAL: 1" = 10'



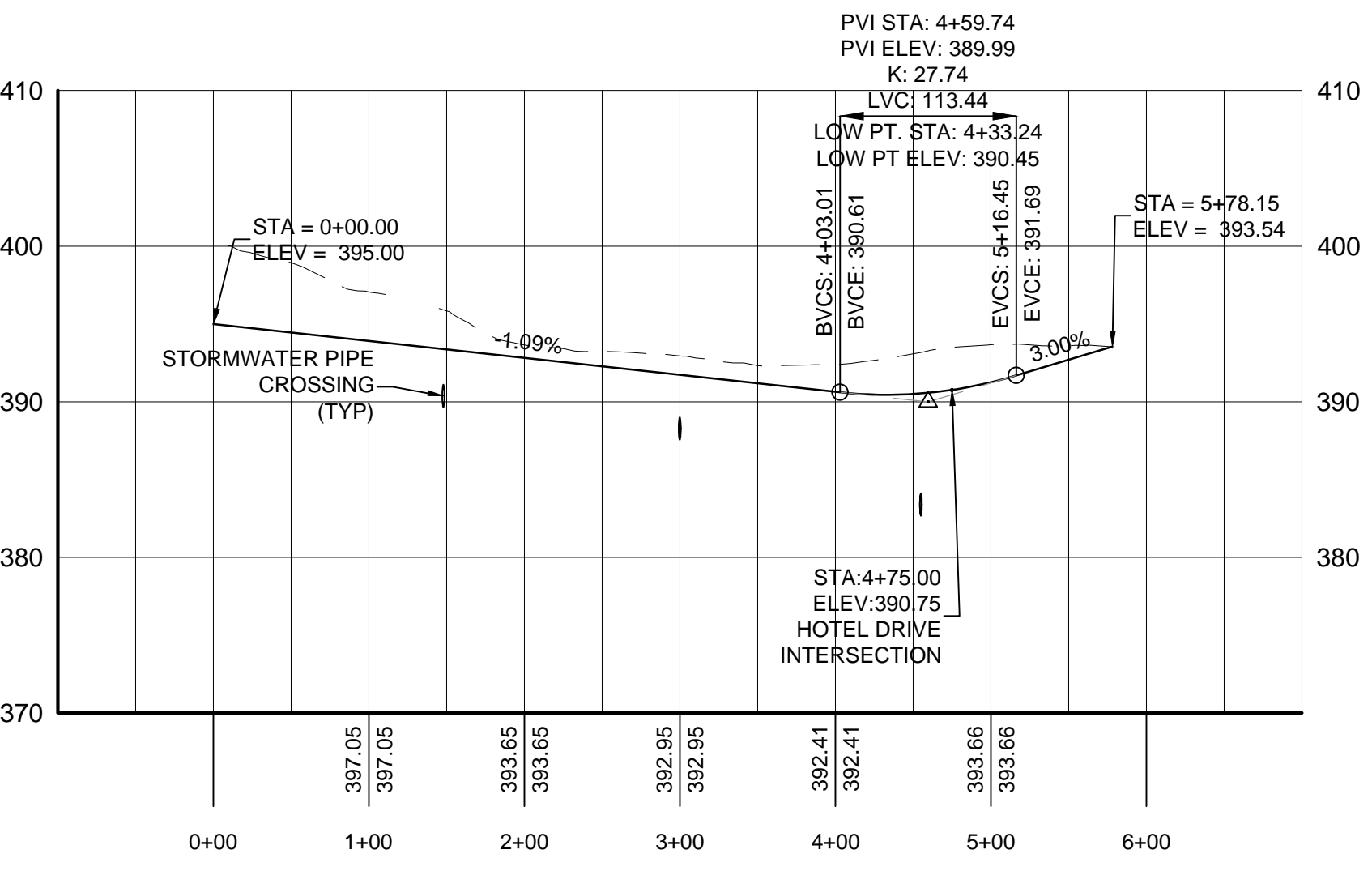
HOTEL DRIVE PROFILE
SCALE: HORIZONTAL: 1" = 100'
VERTICAL: 1" = 10'



MAIN STREET PROFILE
SCALE: HORIZONTAL: 1" = 100'
VERTICAL: 1" = 10'



EAST DRIVE PROFILE
SCALE: HORIZONTAL: 1" = 100'
VERTICAL: 1" = 10'



SCIENCE DRIVE PROFILE
SCALE: HORIZONTAL: 1" = 100'
VERTICAL: 1" = 10'

| REVISIONS | DATE | DESCRIPTION | BY/CHK | DATE | DESCRIPTION | BY/CHK |
|-----------|------|--------------------------|--------|------|-------------|--------|
| 1-15-20 | | UPDATED FOR DEIS | | | | NG/TA |
| 4-10-18 | | REVISED SITE LAYOUT | | | | NG/TA |
| 3-9-20 | | DEIS COMPLETENESS REVIEW | | | | NG/TA |
| | | | | | | BY/CK |

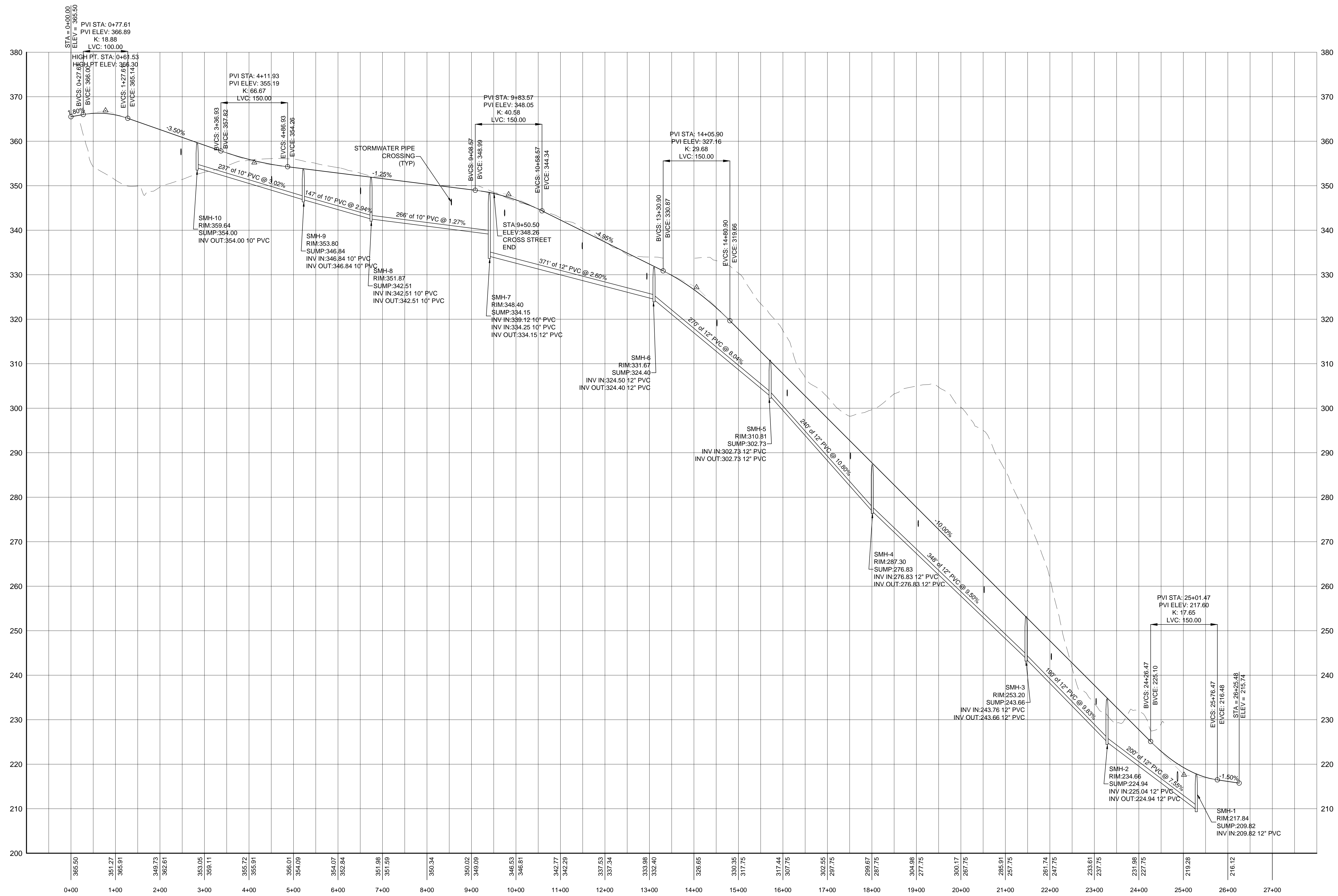
ROAD PROFILES I

WESTCHESTER MEDICAL VILLAGE
STREET ADDRESS
TOWN OF MOUNT PLEASANT, WESTCHESTER COUNTY

DATE: NOV. 14, 2017
SCALE: AS SHOWN
FILE: 12-D
DSGN / CHK: NG/TA
DRN. BY: NG
SHT NO. 5 OF 6
DWG NO. **RP-1**

UNAUTHORIZED ALTERATIONS AND ADDITIONS TO THIS DRAWING IS A VIOLATION OF SECTION 205 OF THE NEW YORK STATE ENGINEERING LAW.

© 2018 BIBBO ASSOCIATES, LLP
ALL RIGHTS RESERVED. UNAUTHORIZED REPRODUCTION IS A VIOLATION OF APPLICABLE LAW.



WESTERN STREET PROFILE

SCALE: HORIZONTAL: 1" = 100'
 VERTICAL: 1" = 10'

UNAUTHORIZED ALTERATIONS AND ADDITIONS TO THIS DRAWING IS A VIOLATION OF SECTION 2209, 2301 OF THE NEW YORK STATE ENGINEERING LAW.

| REVISIONS | DATE | DESCRIPTION | BY/CK |
|-----------|---------|--------------------------|-------|
| | 3-9-20 | DEIS COMPLETENESS REVIEW | NG/TA |
| | 1-15-20 | UPDATED FOR DEIS | NG/TA |
| | 3-2-18 | REVISED SITE LAYOUT | NG/TA |

| | | |
|--|--|---------------------|
| ROAD PROFILES II | | DATE: NOV. 14, 2017 |
| WESTCHESTER MEDICAL VILLAGE | | SCALE: 1" = 100' |
| STREET ADDRESS | | FILE: 12-D |
| TOWN OF MOUNT PLEASANT, WESTCHESTER COUNTY | | DSGN / CHK: NG/TA |
| | | DRN. BY: NG |
| | | SHT NO. 6 OF 6 |
| BIBBO ASSOCIATES, LLP 293 ROUTE 100 SUITE 203 SOMERS, NEW YORK 10589 TEL. 914-277-8805 | | DWG NO. RP-2 |